

PRELIMINARY PLAN
Phase 5C
Lot Information Plan



- NOTES:**
- All information shown on this plan is deemed accurate to the date shown. Landscape shown as conceptual only.
 - Location of street furniture and shallow utilities subject to change. Qualico will not relocate conflicts.
 - Bungalows and 2 storey require window wells.
 - Surveyors - building pocket supersedes marketing map.
 - Retaining walls, if required, installed at purchaser's cost.
 - A 2.7 metre utility right of way is located in front all lots.
 - Design and connection to foundation drain/storm service to be in accordance with the City of Edmonton Foundation Drain Discharge Collect System Guideline, and is the responsibility of the home builder.
 - Sump pump and roof leader connection to storm service required on lots 31-62 block 15, lots 13-25 block 16 and lots 1-27 block 17.
 - A 1.5 metre zero lot line maintenance/drainage easement is located on lots 13-25 block 16 and lots 2-27 block 17.
 - Gas, power and cross lot drainage easements registered on lots 31-62, block 15.

20 JUNE 2022

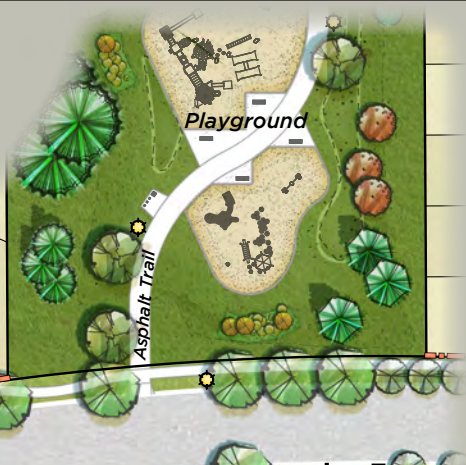
Preliminary Plan. This is prepared as a conceptual plan only and all elements are **subject to change** without notification and should not be relied upon. Please refer to the registered subdivision plan and approved engineering drawings to confirm all information. Dimensions are in feet and rounded.

- 26** Single Family Home with driveway location & house width in feet
- 24** Zero lot line Single Family Home with house width in feet
- 20/20/20** Townhome with house width in feet
- Approximate tree locations are subject to change

- LEGEND**
- Street light
 - Transformer
 - Fire hydrant
 - Power/communication cabinet
 - Bus stop
 - Storm service required (see note 8)
 - Distributed soil (RC)
 - 1.5 m zero lot line maintenance/drainage easement
 - Banked Metering Easement (see note 10)
 - Garage location
 - Noise attenuation fence
 - Screen fence
 - Drainage swale
 - Entrance feature (RC)

the uplands AT RIVERVIEW

PRELIMINARY PLAN Phase 11 Lot Information Plan



LEGEND

- Street light
- Transformer
- Power/communication cabinet
- Utility vault
- Fire hydrant
- Storm service required (see note 8)
- Fence and berm restrictive covenant (RC)
- Disturbed soil (RC)
- 1.5 m zero lot line maintenance/drainage easement

- Single Family Home with garage location and house width in feet
- Single Family (Zero Lot Line) Home with garage location and house width in feet
- Duplex Style Home with garage location and house width in feet
- Garage location
- Approximate tree locations are subject to change
- Drainage swale
- Screen fence
- Noise Attenuation fence (RC)

NOTES:

1. All information shown on this plan is deemed accurate to the date shown. Landscape shown as conceptual only.
2. Location of street furniture and shallow utilities subject to change. Qualico will not relocate conflicts.
3. Bungalows and 2 Storey require window wells.
4. Surveyors - Building pocket supersedes marketing map.
5. Retaining walls, if required, installed at purchaser's cost.
6. A 2.7 metre Utility Right of Way is located in the front of all lots.
7. Design and connection to foundation drain/storm service to be in accordance with the City of Edmonton Foundation Drain Discharge Collect System Guideline, and is the responsibility of the home builder.
8. Sump pump and roof leader connection to storm service required on lots 12 - 19 and 32 - 42 block 19.
9. A 1.5 metre zero lot line maintenance/drainage easement is located on lots 13 - 19 and lots 37 - 42, block 19.

LiveInTheUplands.com

Preliminary Plan. This is prepared as a conceptual plan only and all elements are subject to change without notification and should not be relied upon. Please refer to the registered subdivision plan and approved engineering drawings to confirm all information. Dimensions are in feet and rounded. **21 FEBRUARY 2024**

WE CREATE WHAT WE BELIEVE IN

QUALICO
communities



LEGEND

- Street light
- Transformer
- Fire hydrant
- Power/communication cabinet
- Utility vault
- Storm service required (see note 8)
- Fence and berm restrictive covenant (RC)
- Distributed soil (RC)
- Pressure reduction valve (RC)
- 1.5 m zero lot line maintenance/drainage easement
- Zero lot line Single Family Home with garage location and house width in feet
- Zero Lot Line Single Family Home with Rear Detached garage, house width in feet
- Garage location
- Noise attenuation fence
- Screen fence
- Drainage swale
- Approximate tree locations are subject to change

NOTES:

1. All information shown on this plan is deemed accurate to the date shown. Landscape shown as conceptual only.
2. Location of street furniture and shallow utilities subject to change. Qualico will not relocate conflicts.
3. Bungalows and 2 storey require window wells.
4. Surveyors - building pocket supersedes marketing map.
5. Retaining walls, if required, installed at purchaser's cost.
6. A 2.7 metre utility right of way is located in front all lots.
7. Design and connection to foundation drain/storm service to be in accordance with the City of Edmonton Foundation Drain Discharge Collect System Guideline, and is the responsibility of the home builder.
8. Sump pump and roof leader connection to storm service required on all lots.
9. A 1.5 metre zero lot line maintenance/drainage easement is located on lots 5 - 7 and 9 - 35 block 22 and lots 18 - 33 block 23.



WE CREATE WHAT WE
BELIEVE IN

QUALICO[®]
communities

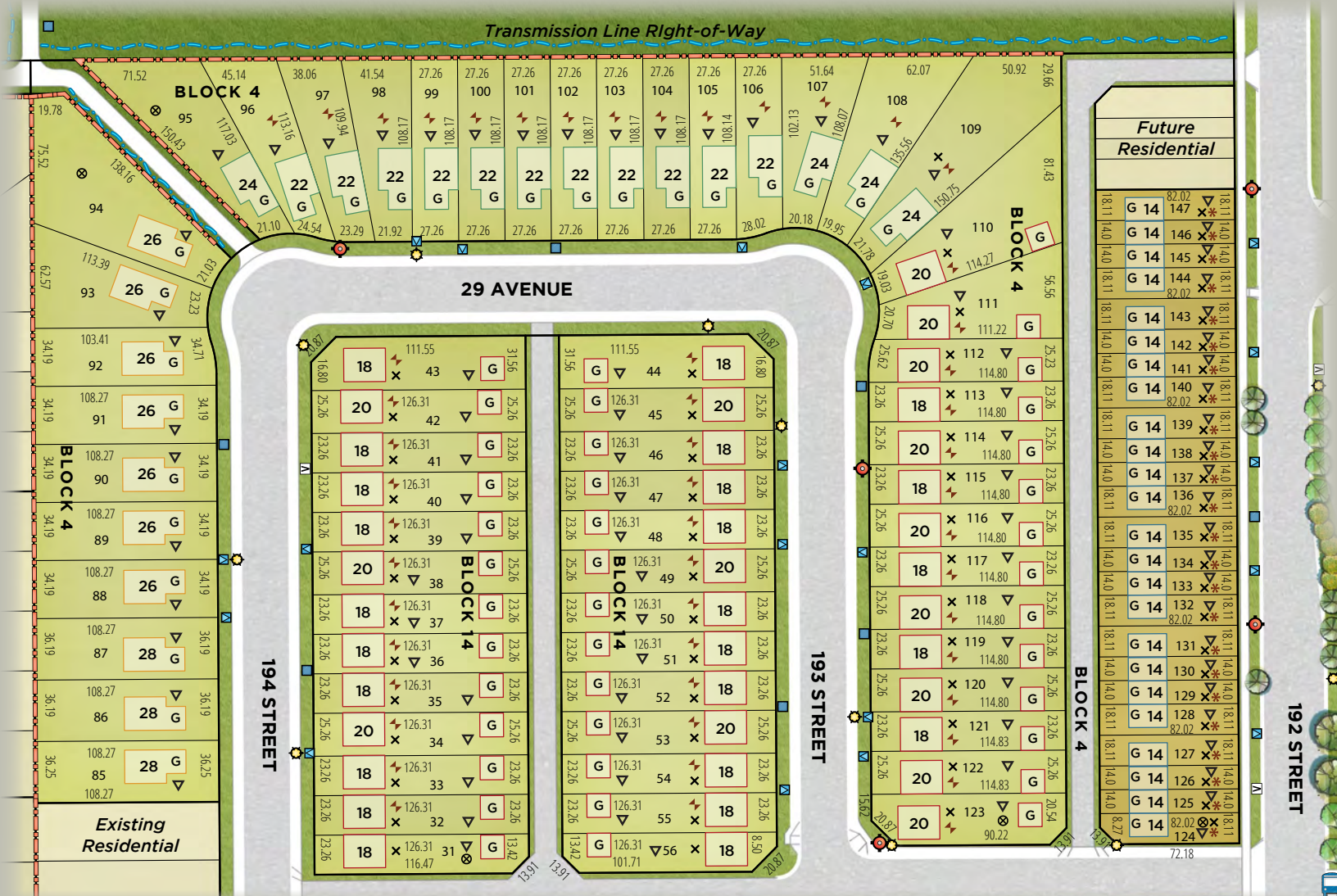
LiveInTheUplands.com

15 DECEMBER 2022

MASKĒOSIHK TRAIL

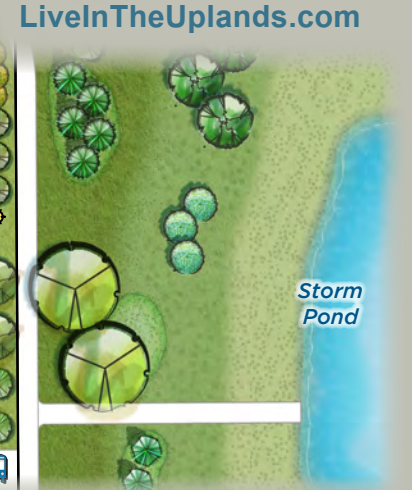
Preliminary Plan. This is prepared as a conceptual plan only and all elements are **subject to change** without notification and should not be relied upon. Please refer to the registered subdivision plan and approved engineering drawings to confirm all information. Dimensions are in feet and rounded.

PRELIMINARY PLAN Phase 13 Lot Information Plan



- NOTES:**
- All information shown on this plan is deemed accurate to the date shown. Landscape shown as conceptual only.
 - Location of street furniture and shallow utilities subject to change. Qualico will not relocate conflicts.
 - Bungalows and 2 storey require window wells.
 - Surveyors - building pocket supersedes marketing map.
 - Retaining walls, if required, installed at purchaser's cost.
 - A 2.7 metre utility right of way is located in front all lots.
 - Design and connection to foundation drain/storm service to be in accordance with the City of Edmonton Foundation Drain Discharge Collect System Guideline, and is the responsibility of the home builder.
 - Sump pump and roof leader connection to storm service required on lots 109 - 147 block 4 and lots 31 - 56 block 14.
 - A 1.5 metre zero lot line maintenance/drainage easement is located on lots 96 - 123 block 4 and lots 32 - 55 block 14.
 - Footing elevation (684.83m) and water service depth (684.08m) restrictive covenant (RC) on lots 85 - 147 block 4 and lots 31 - 56 block 14.
 - Gas, power and cross lot drainage easements and RC registered on lots 124 - 147 block 4.

6 FEBRUARY 2023
Preliminary Plan. This is prepared as a conceptual plan only and all elements are **subject to change** without notification and should not be relied upon. Please refer to the registered subdivision plan and approved engineering drawings to confirm all information. Dimensions are in feet and rounded.



LEGEND

- Street light
- Transformer
- Fire hydrant
- Power/communication cabinet
- Utility vault
- Bus stop
- Single Family Home with garage location & house width in feet
- Zero lot line Single Family Home with garage location & house width in feet
- Zero Lot Line Single Family Home with Rear Detached garage, house width in feet
- Townhome with house width in feet
- Storm service required (see note 8)
- Distributed soil (RC)
- 1.5 m zero lot line maintenance/drainage easement
- Banked Metering Easement (see note 11)
- Garage location
- Pressure reduction valve (RC)
- Screen fence
- Swale
- Approximate tree locations are subject to change

PRELIMINARY PLAN
Phase 14
Lot Information
Plan

LEGEND

- Street light
- Transformer
- Power/communication cabinet
- Utility vault
- Fire hydrant
- Storm service required (see note 8)
- Ravine setback restrictive covenant (RC)
- Pressure reduction valve (RC)
- 1.5 m zero lot line maintenance/drainage easement
- Single Family Home with garage location and house width in feet
- Single Family (Zero Lot Line) Home with garage location and house width in feet
- Zero Lot Line Single Family Home with Rear Detached garage, house width in feet
- Garage location
- Approximate tree locations are subject to change
- Drainage swale
- Screen fence
- Chain link fence
- Gate

NOTES:

1. All information shown on this plan is deemed accurate to the date shown. Landscape shown as conceptual only.
2. Location of street furniture and shallow utilities subject to change. Qualico will not relocate conflicts.
3. Bungalows and 2 Storey require window wells.
4. Surveyors - Building pocket supersedes marketing map.
5. Retaining walls, if required, installed at purchaser's cost.
6. A 2.7 metre Utility Right of Way is located in the front of all lots.
7. Design and connection to foundation drain/storm service to be in accordance with the City of Edmonton Foundation Drain Discharge Collect System Guideline, and is the responsibility of the home builder.
8. Sump pump and roof leader connection to storm service required on lots 167 - 174 block 1, lots 40 - 43 block 22 and lots 1 - 11 block 24.
9. A 1.5 metre zero lot line maintenance/drainage easement is located on lots 41 - 43 block 22 and lots 2 - 11, block 24.



LiveInTheUplands.com

Preliminary Plan. This is prepared as a conceptual plan only and all elements are subject to change without notification and should not be relied upon. Please refer to the registered subdivision plan and approved engineering drawings to confirm all information. Dimensions are in feet and rounded. **15 DECEMBER 2022**

WE CREATE WHAT WE
BELIEVE IN

QUALICO
 communities

PRELIMINARY PLAN

Phase 17A Lot Information Plan



29 AVENUE



NOTES:

1. All information shown on this plan is deemed accurate to the date shown. Landscape shown as conceptual only.
2. Location of street furniture and shallow utilities subject to change. Qualico will not relocate conflicts.
3. Bungalows and 2 storey require window wells.
4. Surveyors building pocket supersedes marketing map.
5. Retaining walls, if required, installed at purchaser's cost.
6. A 2.7 metre utility right of way is located in front all lots.
7. Design and connection to foundation drain/storm service to be in accordance with the City of Edmonton Foundation Drain Discharge Collect System Guideline, and is the responsibility of the home builder.
8. Pressure Reducing Valves to be installed on all lots prior to meter setting.
9. Disturbed Soil Restrictive Covenant on lot 32 block 26, geotechnical evaluation required.
10. Footing depth shall not exceed 683.78m and water services shall not exceed 683.03m or 3m depth of bury from lowest front of lot elevation.

16 FEBRUARY 2024

Preliminary Plan. This is prepared as a conceptual plan only and all elements are **subject to change** without notification and should not be relied upon. Please refer to the registered subdivision plan and approved engineering drawings to confirm all information. Dimensions are in feet and rounded.

LiveInTheUplands.com

LEGEND

- Street light
- Transformer
- Fire hydrant
- Power/communication cabinet
- Utility vault
- Garage location
- Screen fence
- Chain link fence
- Drainage swale

- 26 Single Family Home with garage location & house width in feet
- 20/20 Duplex Style Home with house width in feet
- Pressure Reducing Valve Restrictive Covenant (RC)
- Disturbed soil (RC)
- Approximate tree locations are subject to change

Storm Pond

the uplands AT RIVERVIEW

PRELIMINARY PLAN

Phase 17B Lot Information Plan



LEGEND

- Street light
- Transformer
- Fire hydrant
- Power/communication cabinet
- Utility vault
- Pressure Reducing Valve Restrictive Covenant (RC)
- Storm service required (see note 8)
- Walkout/partial walkout lot potential
- Freeboard RC (see note 9)
- Single Family Home with garage location & house width in feet
- Screen fence
- Chain link fence
- Drainage swale
- Approximate tree locations are subject to change

NOTES:

1. All information shown on this plan is deemed accurate to the date shown. Landscape shown as conceptual only.
2. Location of street furniture and shallow utilities subject to change. Qualico will not relocate conflicts.
3. Bungalows and 2 storey require window wells.
4. Surveyors building pocket supersedes marketing map.
5. Retaining walls, if required, installed at purchaser's cost.
6. A 2.7 metre utility right of way is located in front all lots.
7. Design and connection to foundation drain/storm service to be in accordance with the City of Edmonton Foundation Drain Discharge Collect System Guideline, and is the responsibility of the home builder.
8. Sump pump and roof leader connection to storm service required on lots 14 - 23 block 18.
9. Footing elevation (682.65m) and minimum opening elevation (685.50m) restrictive covenant (RC) on lots 15 - 23 block 18.
10. Pressure Reducing Valves to be installed on all lots prior to meter setting.
11. Footing depth shall not exceed 683.78m and water services shall not exceed 683.03m or 3m depth of bury from lowest front of lot elevation.

WE CREATE WHAT WE
BELIEVE IN

QUALICO
communities

Preliminary Plan. This is prepared as a conceptual plan only and all elements are **subject to change** without notification and should not be relied upon. Please refer to the registered subdivision plan and approved engineering drawings to confirm all information. Dimensions are in feet and rounded.

LiveInTheUplands.com

27 AUG 2024

the uplands AT RIVERVIEW

PRELIMINARY PLAN
Phase 18AB
Lot Information Plan



LEGEND

- Street light
- Transformer
- Fire hydrant
- Power/communication cabinet
- Utility vault
- Gate
- Screen fence
- Chain link fence
- Drainage swale
- Ravine setback Restrictive Covenant (RC)

- 26 Single Family Home with garage location & house width in feet
- 24 Zero lot line Single Family Home with garage location & house width in feet
- 20 Zero Lot Line Single Family Home with Rear Detached garage, house width in feet
- Garage location
- Storm service required (see note 8)
- Pressure Reducing Valve (RC)
- 1.5 m zero lot line maintenance/drainage easement
- Approximate tree locations are subject to change

NOTES

1. All information shown on this plan is deemed accurate to the date shown. Landscape shown as conceptual only.
2. Location of street furniture and shallow utilities subject to change. Qualico will not relocate conflicts.
3. Bungalows and 2 storey require window wells.
4. Surveyors - building pocket supersedes marketing map.
5. Retaining walls, if required, installed at purchaser's cost.
6. A 2.7 metre utility right of way is located in front of all lots.
7. Design and connection to foundation drain/storm service to be in accordance with the City of Edmonton Foundation Drain Discharge Collect System Guideline, and is the responsibility of the home builder.
8. Sump pump and roof leader connection to storm service required on lots 187 - 190 & 220 - 222 block 1, lots 12 - 32 block 24, lots 1 - 18 block 28 and lots 1 - 9 block 29.
9. A 1.5 metre zero lot line maintenance/drainage easement is located on lots 187 - 190 block 1, lots 12 - 32 block 24, lots 1 - 18 block 28, lots 1 - 9 block 29.
10. Pressure Reducing Valves to be installed on lots 186 - 190 block 1, lots 12 - 23 block 24 and lot 1 block 28 prior to meter setting. Footing elevation depth shall not exceed 686.00m and water services shall not exceed 685.25m or 3m below the lowest front of lot grade.

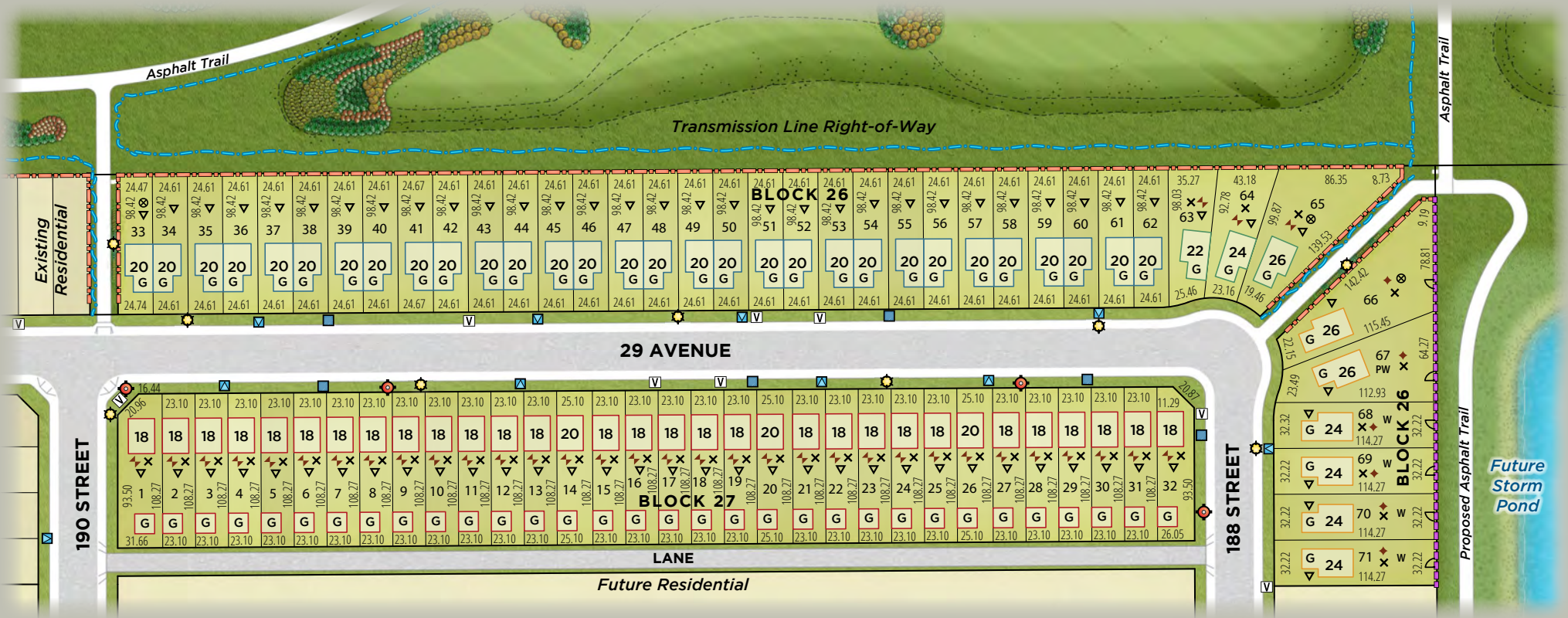
25 FEBRUARY 2025

Preliminary Plan. This is prepared as a conceptual plan only and all elements are **subject to change** without notification and should not be relied upon. Please refer to the registered subdivision plan and approved engineering drawings to confirm all information. Dimensions are in feet and rounded.

LiveInTheUplands.com

WE CREATE WHAT WE
BELIEVE IN

QUALICO[®]
communities



LEGEND

- Street light
- Transformer
- Fire hydrant
- Power/communication cabinet
- Utility vault
- Garage location
- Gate
- Screen fence
- Chain link fence
- Drainage swale
- Freeboard Restrictive Covenant (RC) (see note 10)
- Disturbed soil (RC)

- 26 Single Family Home with garage location & house width in feet
- 24 Zero lot line Single Family Home with garage location & house width in feet
- 20 Zero Lot Line Single Family Home with Rear Detached garage, house width in feet
- 20/20 Duplex Style Home with house width in feet
- W / PW Walkout/partial walkout lot potential
- X Storm service required (see note 8)
- Inverted triangle Pressure Reducing Valve (RC)
- Lightning bolt 1.5 m zero lot line maintenance/drainage easement
- Tree Approximate tree locations are subject to change

NOTES

1. All information shown on this plan is deemed accurate to the date shown. Landscape shown as conceptual only.
2. Location of street furniture and shallow utilities subject to change. Qualico will not relocate conflicts.
3. Bungalows and 2 storey require window wells.
4. Surveyors - building pocket supersedes marketing map.
5. Retaining walls, if required, installed at purchaser's cost.
6. A 2.7 metre utility right of way is located in front all lots.
7. Design and connection to foundation drain/storm service to be in accordance with the City of Edmonton Foundation Drain Discharge Collect System Guideline, and is the responsibility of the home builder.
8. Sump pump and roof leader connection to storm service required on lots 1 - 32 block 27 and lots 63 - 71 block 26.
9. A 1.5 metre zero lot line maintenance/drainage easement is located on lots 64 - 65 block 26 and lots 1 - 32 block 27.
10. Minimum footing elevation (679.65m) and building opening elevation (682.98m) restrictive covenant (RC) on lots 66 - 71 block 26.
11. Pressure Reducing Valves to be installed on all lots prior to meter setting.
12. Disturbed Soil Restrictive Covenant on lots 33, 65 and 66 block 26, geotechnical evaluation required.

7 MARCH 2024

Preliminary Plan. This is prepared as a conceptual plan only and all elements are **subject to change** without notification and should not be relied upon. Please refer to the registered subdivision plan and approved engineering drawings to confirm all information. Dimensions are in feet and rounded.

LiveInTheUplands.com

WE CREATE WHAT WE
BELIEVE IN

QUALICO[®]
communities



8 NOVEMBER 2024

Preliminary Plan. This is prepared as a conceptual plan only and all elements are **subject to change** without notification and should not be relied upon. Please refer to the registered subdivision plan and approved engineering drawings to confirm all information. Dimensions are in feet and rounded.

WE CREATE WHAT WE BELIEVE IN

QUALICO
communities

the uplands

AT RIVERVIEW



Wedgewood Ravine

Asphalt Trail

Ravine Top of Bank Development Setback

Future Residential

PRELIMINARY PLAN

Phase 22 Lot Information Plan

LEGEND

- Street light
- Transformer
- Fire hydrant
- Power/communication cabinet
- Utility vault
- Ravine setback Restrictive Covenant (RC)
- Storm service required (see note 8)
- 1.5 m zero lot line maintenance/drainage easement
- Single Family Home with garage location & house width in feet
- Zero lot line Single Family Home with garage location & house width in feet
- Garage location
- Screen fence
- Chain link fence
- Gate
- Drainage swale
- Approximate tree locations are subject to change

NOTES:

1. All information shown on this plan is deemed accurate to the date shown. Landscape shown as conceptual only.
2. Location of street furniture and shallow utilities subject to change. Qualico will not relocate conflicts.
3. Bungalows and 2 storey require window wells.
4. Surveyors building pocket supersedes marketing map.
5. Retaining walls, if required, installed at purchaser's cost.
6. A 2.7 metre utility right of way is located in front of all lots.

7. Design and connection to foundation drain/storm service to be in accordance with the City of Edmonton Foundation Drain Discharge Collect System Guideline, and is the responsibility of the home builder.
8. Sump pump and roof leader connection to storm service required on lots 191 - 208 block 1.
9. A 1.5 metre zero lot line maintenance/drainage easement is located on lots 191 - 203 block 1.



LiveInTheUplands.com

Preliminary Plan. This is prepared as a conceptual plan only and all elements are **subject to change** without notification and should not be relied upon. Please refer to the registered subdivision plan and approved engineering drawings to confirm all information. Dimensions are in feet and rounded.

25 FEBRUARY 2025

WE CREATE WHAT WE
BELIEVE IN

QUALICO
communities



LEGEND

- Street light
- Transformer
- Fire hydrant
- Power/communication cabinet
- Utility vault
- Ravine setback Restrictive Covenant (RC)
- Storm service required (see note 8)
- Single Family Home with garage location & house width in feet
- Garage location
- Screen fence
- Chain link fence
- Gate
- Drainage swale
- Approximate tree locations are subject to change

NOTES:

1. All information shown on this plan is deemed accurate to the date shown. Landscape shown as conceptual only.
2. Location of street furniture and shallow utilities subject to change. Qualico will not relocate conflicts.
3. Bungalows and 2 storey require window wells.
4. Surveyors building pocket supersedes marketing map.
5. Retaining walls, if required, installed at purchaser's cost.
6. A 2.7 metre utility right of way is located in front of all lots.
7. Design and connection to foundation drain/storm service to be in accordance with the City of Edmonton Foundation Drain Discharge Collect System Guideline, and is the responsibility of the home builder.
8. Sump pump and roof leader connection to storm service required on lots 209 - 219 block 1 and lots 28 - 32 block 28.



WE CREATE WHAT WE
BELIEVE IN

QUALICO[®]
communities

23 JULY 2025

Preliminary Plan. This is prepared as a conceptual plan only and all elements are **subject to change** without notification and should not be relied upon. Please refer to the registered subdivision plan and approved engineering drawings to confirm all information. Dimensions are in feet and rounded.

LiveInTheUplands.com