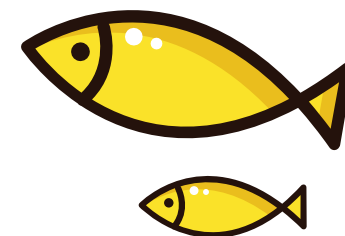


KEEP it CLEAN



A resident's guide to water stewardship

WATER TREATMENT FACILITIES

Tap water comes from the North Saskatchewan River, after it is passed through a water treatment plant. The water that goes down the drain cycles back to the water treatment plant and then returns to the river:

- Without safe water we would all get sick.
- Pouring prescriptions, lotions, and perfumes down the drain means the treatment plant must work even harder to clean the water returning to the river.
- The treatment plant may not be able to remove all waste from the water it is returning to the river.
- Reducing pollution is the best defense for safe drinking water and a clean environment.



STORMWATER SYSTEMS

Beneath the ground is an intricate system of storm water sewers designed to capture rainwater and prevent roads from flooding:

- The system is designed for rainwater only - roadway runoff is not treated.
- The storm system does not take water to the water treatment plant – it is taken to either a storm water management facility (storm pond) or the North Saskatchewan River.

COMMUNITY INITIATIVES

Initiatives are underway to help improve local water quality and reduce negative impacts created by our growing communities, such as:

- Education opportunities like this pamphlet, interpretive signage, and programs like the Yellow Fish Road.
- Specific monitoring and reporting programs for construction activities and post-construction sites.

FOLLOW THE YELLOW FISH

The 'Yellow Fish' seen on storm drains in communities are a reminder to be 'water aware':

- Storm drains empty out into storm water management facilities, rivers, and sometimes even lakes, areas that also serve as important homes to many animals and plants, not just fish.
- As waste breaks down, harmful chemicals enter the watershed. Motor oils, antifreeze, and lubricants add metals and nutrients to runoff resulting in poor water quality. Fertilizers cause nutrient spikes in runoff contributing to unsightly algae blooms that hurt the ecosystem.
- **Most storm water goes to your local rivers untreated. Yellow Fish have been painted near storm drains in your community, reminding people "Rain Only" goes down storm drains. Anything else impacts our drinking water, rivers & local wildlife.**

WHAT YOU CAN DO

- Turn off the tap to brush your teeth, take shorter showers, replace outdated appliances and use low flow fixtures to reduce water consumption and lessen pressure on treatment facilities.
- Use the car wash and not your driveway and opt for sand instead of salt on icy walks.
- Find natural alternatives to herbicides, pesticides, and detergents to keep them out of the storm system after a rain.
- Add native plants and grasses to your yard. They create habitat, take up excess nutrients, and hold soils in place.
- **Rely on the Edmonton's Eco-Station facilities to dispose of waste.**
- Look into programs offered by the City of Edmonton such as 'Rain Garden in a Box'.

