



Stantec Consulting Ltd.
 10160 - 112 Street
 Edmonton AB Canada
 Tel. 780.917.7000
 www.stantec.com

Copyright Reserved
 The Contractor shall verify and be responsible for all dimensions. DO NOT scale the drawing - any errors or omissions shall be reported to Stantec without delay. The Copyrights to all designs and drawings are the property of Stantec. Reproduction or use for any purpose other than that authorized by Stantec is forbidden.

Legend/Notes

RF MONO	ROLLED FACE MONOLITHIC SIDEWALK, CURB AND GUTTER
SF MONO	STRAIGHT FACE MONOLITHIC SIDEWALK, CURB AND GUTTER
RFCG	ROLLED FACE CURB AND GUTTER
1.50m SIDEWALK	1.50m SIDEWALK
1.50m SIDEWALK	CURB RAMP TYPE
1.8m UNIFORM FENCE	NOISE ATTENUATION FENCE
1.2m UNIFORM FENCE	1.8m UNIFORM FENCE
POST & RAIL FENCE	POST & RAIL FENCE
--- --	LIMIT OF CONSTRUCTION
--- --	DEVELOPMENT BOUNDARY

- REMOVE EXISTING BARRIERS AND TIE INTO EXISTING TO THE SATISFACTION OF THE CITY OF EDMONTON.
- TIE INTO EXISTING TO THE SATISFACTION OF THE CITY OF EDMONTON.
- TRANSITION FROM STANDARD FACE CURB TO ROLLED FACE CURB AT CURB RAMP UNLESS OTHERWISE SHOWN.
- ALL CURB RAMP ARE LOCATED AT THE MIDPOINT OF CURB RETURNS UNLESS OTHERWISE NOTED.
- WITHIN 72 HOURS OF FINAL PAVING, THE CONTRACTOR WILL REQUEST A POST PAVING INSPECTION BY AN EPOR FIELD CREW. ALL POST PAVING INSPECTIONS WILL BE REQUESTED VIA EMAIL TO WPOSTPAVING@EPOR.COM. THE EMAIL SHOULD CONTAIN A MAP SHOWING THE PAVING LIMITS, PROPOSED DATE AND TIME FOR THE INSPECTION AND CONTACT INFORMATION SO THE INSPECTION CAN BE COORDINATED. THE EPOR VALVE CREW, THE CONTRACTOR, AND THE ROADWAYS INSPECTOR TO ENSURE ALL VALVE CASINGS AND WATER CHAMBERS ARE TO GRADE AND FREE OF DEBRIS.
- ALL CATCH BASINS NOT TO CONFLICT WITH ANY PORTION OF ANY CURB RAMP.
- FENCE SHOWN ON THIS DRAWING IS FOR GENERAL INFORMATION ONLY. REFER TO THE APPROVED LANDSCAPE DRAWINGS FOR DETAIL DESIGN INFORMATION.
- ENHANCED FEATURE, REFER TO THE APPROVED LANDSCAPE DRAWINGS FOR DETAIL DESIGN INFORMATION.

ALL STATIONING, CURVE DATA, LENGTHS AND DIMENSIONS ARE AT GRID LEVEL. COMBINED FACTOR 0.999803.

POINT TABLE - STAGE 2B TURNAROUNDS

POINT #	NORTHING	EASTING	DESCRIPTION	ELEVATION
7	5925303.621	22349.043	EOG	688.44
8	5925303.647	22358.041	EOG	688.44
9	5925312.372	22361.767	EOG	688.59
10	5925333.063	22353.457	EOG	689.02
11	5925312.325	22345.268	EOG	688.59
12	5925321.063	22353.492	EOG	689.20
13	5925304.805	22588.926	EOG	687.39
14	5925304.866	22597.924	EOG	687.39
15	5925313.573	22601.581	EOG	687.54
16	5925334.264	22593.272	EOG	687.97
17	5925322.264	22593.307	EOG	688.15
18	5925313.494	22585.116	EOG	687.54

Development Engineer, Sustainable Development - STG 2A	M. MAKHDOOM	16/08/05	
Approvals - Originally Approved By		YY.MM.DD	
RL2245 ADD WALKWAY LOT 26/27, BLK 7 & PLAZA	L.D. T.C.	18.10	
LOT 41 MR, BLK 7			
RL2093 REVISE CORNER CUT FOR LOT 1 & 46 BLK 4, LOT 1 BLK 7, PROP LINE FOR LOT 6 BLK 7	S.S. T.C.	17.01.09	
RL2022 SHFT LOT LINES AND REMOVE WALKWAY	T.H.S. T.C.	16.10.26	
Revision	By	Appd.	YY.MM.DD
7 SECOND WALKWAY - 2B RELOTING	JS	MS	20.06
6 FIRST SUBMISSION - 2B RELOTING	GK	SWC	20.02
5 FIFTH SUBMISSION	TS	TS	16.07
4 FOURTH SUBMISSION	TS	TS	16.07
3 THIRD SUBMISSION	TS	KH	16.05
Issued	Dgn.	Dwn.	YY.MM
PROJECT MANAGER:	TONY CHIARELLO		

Permit-Seal

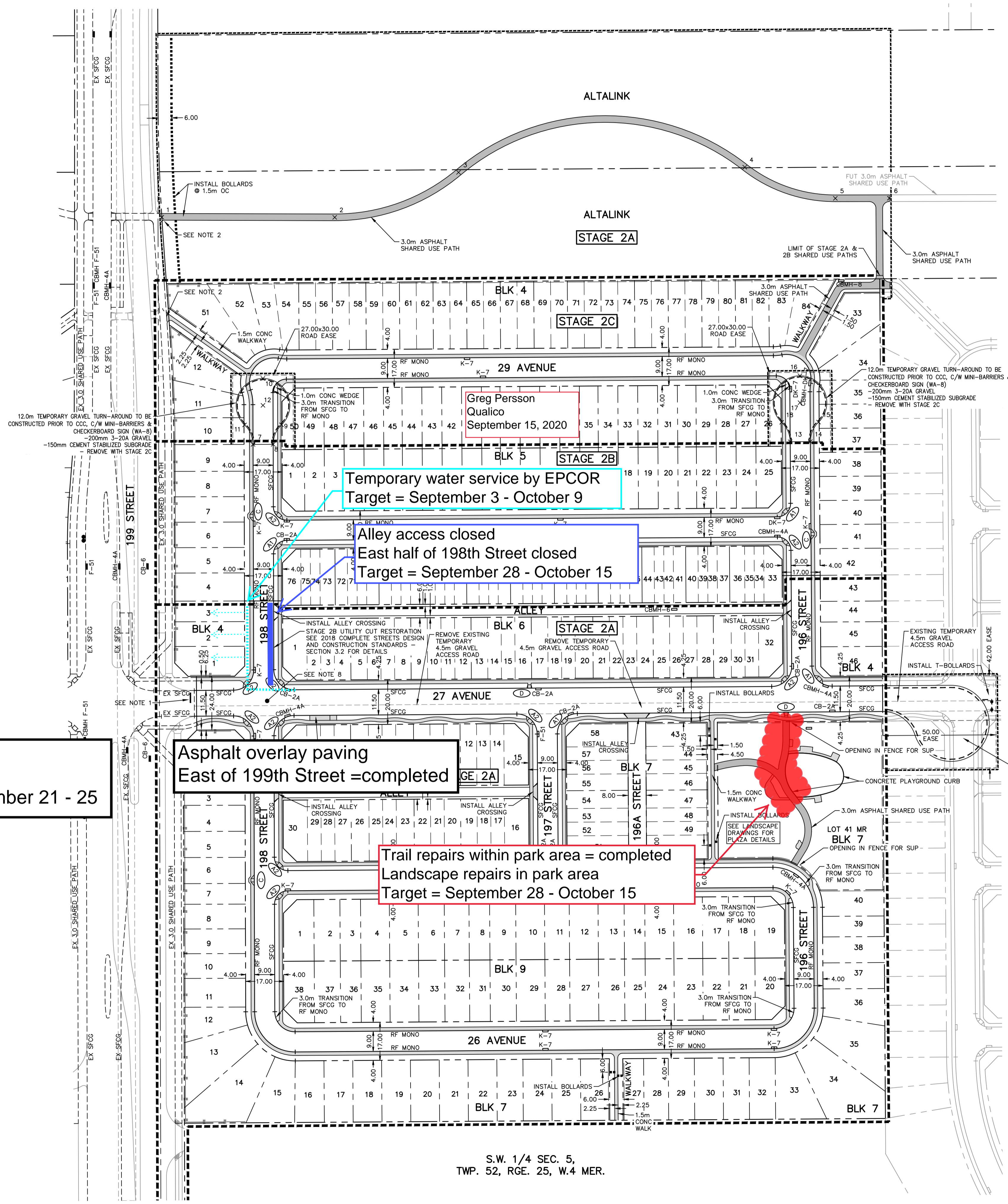
Client/Project
 RIVERVIEW LAND COMPANY LTD.

THE UPLANDS
 STAGE 2A, 2B & 2C
 Edmonton, AB

Title
 ROAD AND SIDEWALK PLAN

Project No. 1161-103540
 Scale 1:1000

Drawing No. C006-001



Asphalt overlay paving
 West of 199th Street
 Target = week of September 21 - 25

Asphalt overlay paving
 East of 199th Street = completed

Trail repairs within park area = completed
 Landscape repairs in park area
 Target = September 28 - October 15

Temporary water service by EPCOR
 Target = September 3 - October 9

Alley access closed
 East half of 198th Street closed
 Target = September 28 - October 15

Greg Persson
 Qualico
 September 15, 2020

S.W. 1/4 SEC. 5,
 TWP. 52, RGE. 25, W.4 MER.